

NO-TEAR™

STORAGE SYSTEM



23201 Antonio Parkway Rancho Santa Margarita, CA 92688
INVENTORY MANAGEMENT SYSTEMS. BUILDING STORAGE AROUND YOUR SUPPLY CHAIN.



NO-TEAR™ THE SYSTEM

DSI's No-Tear™ storage system is designed for storing and handling sterile instrument sets in blue wrap trays and rigid containers. The system is designed with patient care and employee safety in mind with a collection of highly efficient storage equipment combined with a leaned out process within the CS/SPD processing cycle.

Once the instrument tray is prepped, packed in a blue wrap, and placed into our stainless steel wire mesh basket, the blue wrap is never touched again until the Operating Room. The primary cause of punctured blue wraps is by stacking and mishandling the individual trays throughout the processing cycle and transportation.

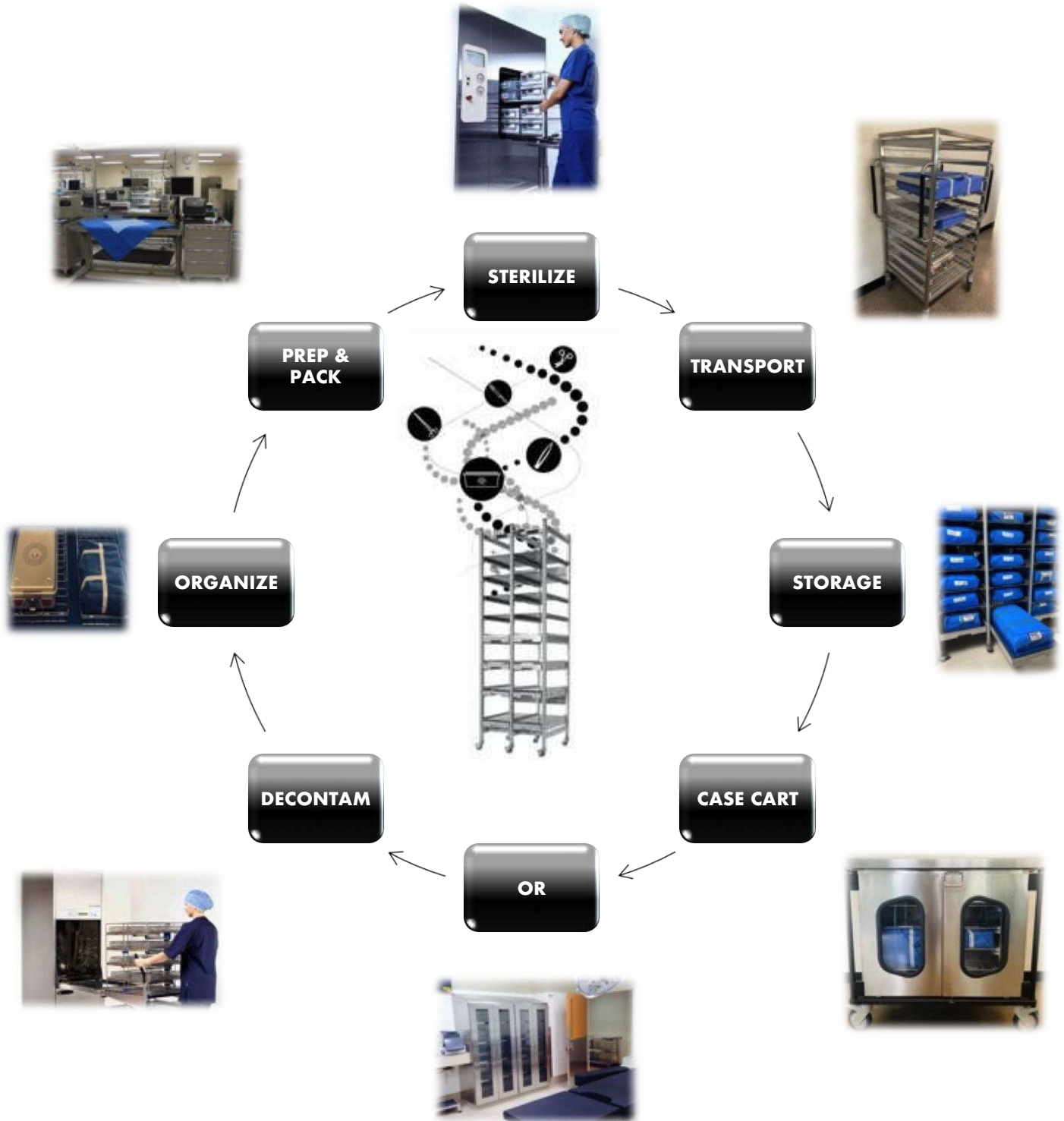
DSI's family of No-Tear™ storage equipment such as our Triton Case Carts™, Triton Transport Carts, and our high density MODU-MAX CTS™ storage systems all include a specialized shelf location designed to fit each tray on its own to eliminate stacking and other handling risks. The need to reprocess sets and reschedule procedures are a thing of the past with this new approach of handling, transporting, and organizing your sterile instrument sets.

The DSI No-Tear™ storage system has a long list of important benefits that will help provide a positive Return On your Investment such as;

- Seamless work flow
- Valuable space savings
- Quicker retrieval
- Eliminate the need for reprocessed instrument sets
- Adjustable storage heights every 1" for maximizing cubic space
- Reduction of handling trays, increasing employee productivity
- Ergonomically designed for safe retrieval and put away
- Enhanced visual indicators for labeling contents
- Clear visibility of inventory
- Categorized inventory by discipline
- Modular design for scalability and future expansion
- Compliance
- Interchangeable components between all three DSI No-Tear™ storage systems



NO-TEAR™ THE PROCESS





NO-TEAR™ THE BENEFITS

MODU-MAX CTS

BENEFITS OF THE CTS



WWW.NO-TEAR.COM

WWW.DSIDIRECT.COM

INVENTORY MANAGEMENT SYSTEMS. BUILDING STORAGE AROUND YOUR SUPPLY CHAIN.

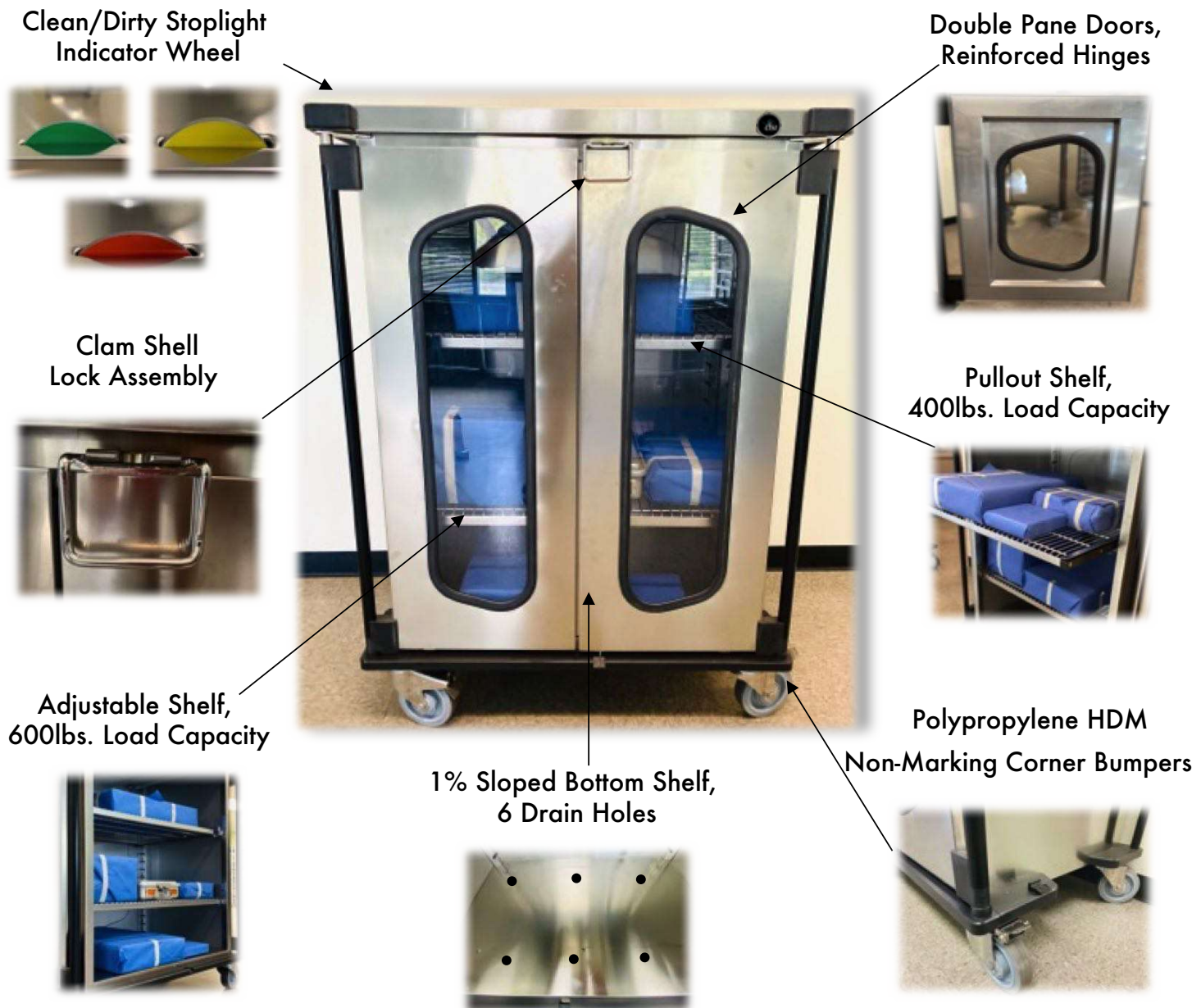


NO-TEAR™ TRITON CASE CARTS™



DSI's line of TRITON CASE CARTS™ are built for transformation. Our modular storage system within the cart interior helps you custom configure the shelves based on the width and height of the surgical instruments stored in both blue wraps and rigid containers. Our carts are a perfect fit for the NO-TEAR™ storage system within your CS/SPD.

Product Specifications



WWW.NO-TEAR.COM

WWW.DSIDIRECT.COM

INVENTORY MANAGEMENT SYSTEMS. BUILDING STORAGE AROUND YOUR SUPPLY CHAIN.



NO-TEAR™ TRITON CASE CARTS™

Product Specifications Continued



Temperature Reducing
Handle



Department Indicator



Extra Clear Plexiglass
Windows, Rubber Seal



Modular
Shelving Framework



High Temp
Washable Stainless
Casters up to 275 F



1 Directional, 2 Brake,
1 Swivel Caster Set



Preconfigured Kits	Product Specifications and Descriptions
D1-TRITON-STD/STD D1-TRITON-STD/CTSOS D1-TRITON-STD/HYBD D1-TRITON-STD/CTS	Standard 39.25"H, Standard Interior, 1 Pullout Shelf, Color Wheel Standard 39.25"H, CTS/OS Interior, 1 Frame, 8 Runner Sets, Color Whl Standard 39.25"H, Hybrid Interior, 2 Frames, 8 Runner Sets, Color Whl Standard 39.25"H, CTS Interior, 3 Frames, 8 Runner Sets, Color Wheel
D1-TRITON-TALL/STD D1-TRITON-TALL/CTSOS D1-TRITON-TALL/HYBD D1-TRITON-TALL/CTS	Tall 59.25"H, Standard Interior, 2 Pullout Shelves, Color Wheel Tall 59.25"H, CTS/OS Interior, 1 Frame, 16 Runner Sets, Color Wheel Tall 59.25"H, Hybrid Interior, 2 Frames, 16 Runner Sets, Color Wheel Tall 59.25"H, CTS Interior, 3 Frames, 16 Runner Sets, Color Wheel

Individual stainless steel wire shelves and baskets for CTS, Hybrid, and OS are not included in the kits

WWW.NO-TEAR.COM

WWW.DSIDIRECT.COM

INVENTORY MANAGEMENT SYSTEMS. BUILDING STORAGE AROUND YOUR SUPPLY CHAIN.



NO-TEAR™ TRITON CASE CARTS™



Modular Shelving Options

Standard



CTS/OS



Hybrid



CTS



WWW.NO-TEAR.COM

WWW.DSIDIRECT.COM

INVENTORY MANAGEMENT SYSTEMS. BUILDING STORAGE AROUND YOUR SUPPLY CHAIN.

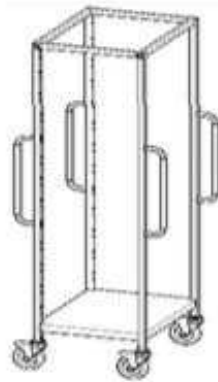


NO-TEAR™ TRITON TRANSPORT CARTS



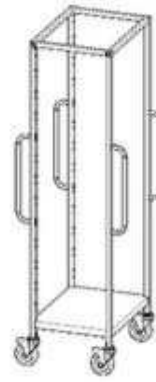
Product Specifications

Single CTS/OS



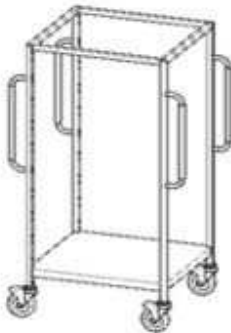
71"H x 25.25"W x 25.25"D

Single CTS



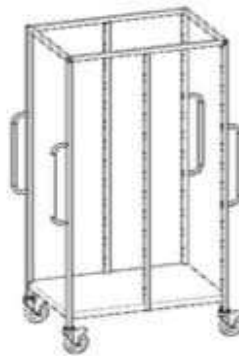
71"H x 17.33"W x 25.25"D

Single XW CTS



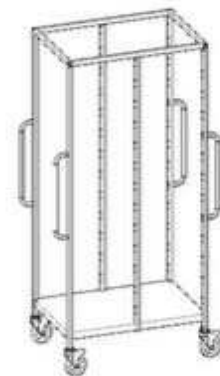
57"H x 33"W x 25.25"D

Double CTS/OS



71"H x 42.5"W x 25.25"D

Double CTS



71"H x 34.6"W x 25.25"D

Preconfigured Kits

Product Specifications and Descriptions

D1-TRITON-SPORT/CTSOS	71"H, Single OS, 13 Runner sets, temp reduced handles, swivel casters
D1-TRITON-SPORT/CTS	71"H, Single CTS, 13 Runner sets, temp reduced handles, swivel casters
D1-TRITON-SPORT/XWCTS	57"H, XWCTS, 9 Runner sets, temp reduced handles, swivel casters
D1-TRITON-SPORT/DBLCTSOS	71"H, Double OS, 26 Runner sets, temp reduced handles, swivel casters
D1-TRITON-SPORT/DBLCTS	71"H, Double CTS, 26 Runner sets, temp reduced handles, swivel casters

Individual stainless steel wire shelves and baskets for CTS, Hybrid, and OS are not included in the kits

WWW.NO-TEAR.COM

WWW.DSIDIRECT.COM

INVENTORY MANAGEMENT SYSTEMS. BUILDING STORAGE AROUND YOUR SUPPLY CHAIN.



NO-TEAR™ TRITON TRANSPORT CARTS



THIS PAGE IS UNDER CONSTRUCTION



WWW.NO-TEAR.COM

WWW.DSIDIRECT.COM

INVENTORY MANAGEMENT SYSTEMS. BUILDING STORAGE AROUND YOUR SUPPLY CHAIN.



NO-TEAR™ MODU-MAX™ STORAGE SYSTEM

BEFORE & AFTER
HIGH-DENSITY MODU-MAX CTS



BEFORE & AFTER
HIGH-DENSITY MODU-MAX CTS



MODU-MAX CTS

BENEFITS OF THE CTS

HIGH DENSITY CONTAINER TRAY STORAGE VS. TRADITIONAL OPEN WIRE SHELVING

- Designed Specifically for Instrument Sets (Rigid Containers & Blue Wraps)
- Dedicated Location for Every Container or Blue Wrap
- Adjustable in 1"H Increments to Optimize Space Between Sets
- Eliminates Stacking of Blue Wraps
- Designed for Better Ergonomics for Employee Safety
- Reduce and/or Eliminate Tears in Blue Wraps (No Touch System)
- Promotes an Open Workflow Within the Department
- Helps Achieve Compliance and Meet National Healthcare Standards
- Broad Range of Visual Indicators/Labeling Available
- Promotes Picking Accuracy and Time Efficiency



- Designed for Bulk Supply Storage
- Does Not Provide Ability to Have Designated Locations Per Set
- Open Wire Shelves Are Set in One Fixed Position Once Assembled
- Promotes Stacking of Instrument Sets
- Rigid Design With Fixed Shelves
- One Size Fits All Methodology (Promotes Stacking)
- Create Bottle Necks in Aisles and Case Cart Staging Area
- Limited Options of Visual Indicators Available
- Does Not Enable Staff to Pick Accurately and Efficiently
- Not Designed for Maximum Space and Time Efficiency

WWW.NO-TEAR.COM

WWW.DSIDIRECT.COM

INVENTORY MANAGEMENT SYSTEMS. BUILDING STORAGE AROUND YOUR SUPPLY CHAIN.



NO-TEAR™ MODU-MAX™ STORAGE SYSTEM



WWW.NO-TEAR.COM

WWW.DSIDIRECT.COM

INVENTORY MANAGEMENT SYSTEMS. BUILDING STORAGE AROUND YOUR SUPPLY CHAIN.



NO-TEAR™ MODU-MAX™ STORAGE SYSTEM



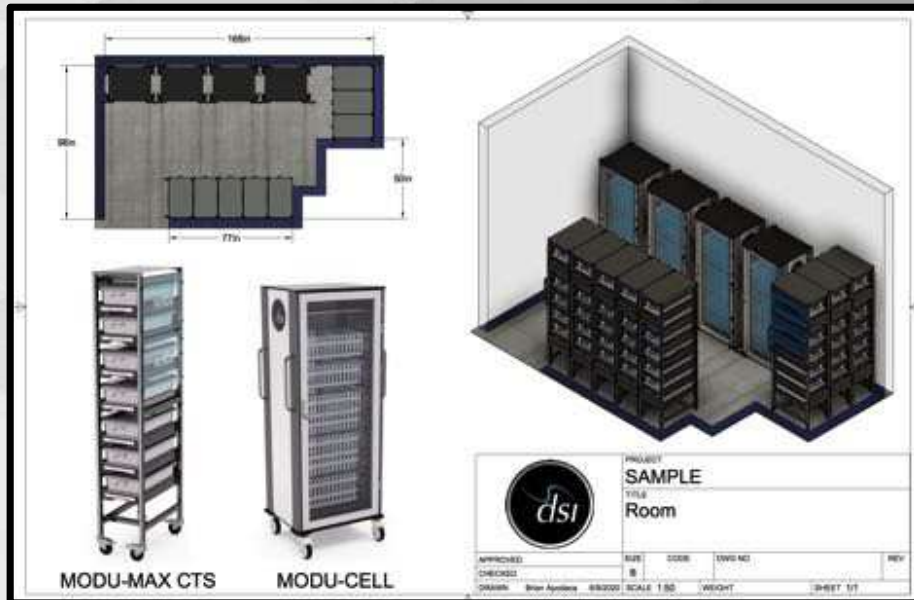
WWW.NO-TEAR.COM

WWW.DSIDIRECT.COM

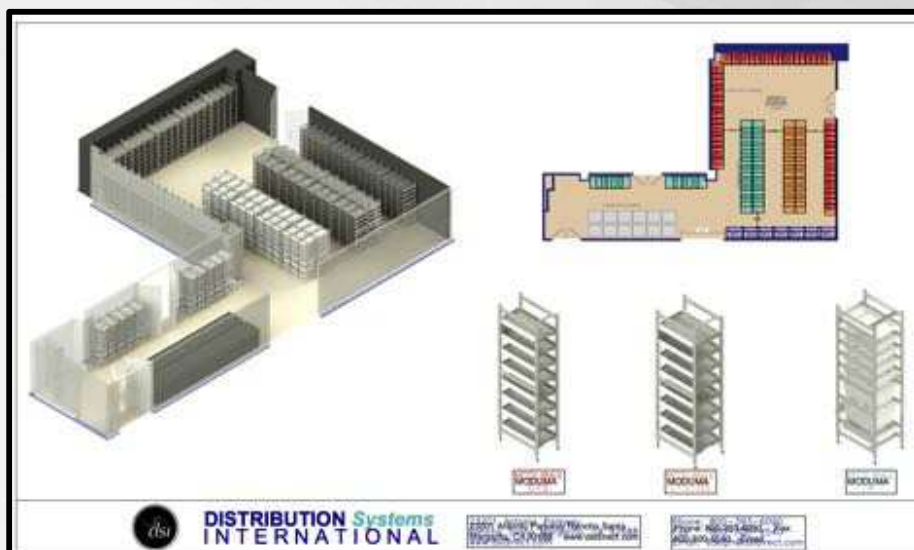
INVENTORY MANAGEMENT SYSTEMS. BUILDING STORAGE AROUND YOUR SUPPLY CHAIN.



3D AutoCAD layouts at no cost.
Give us a call for a free onsite SPACE assessment and WORK FLOW evaluation.



Have you heard of DSI's NO-TEAR™ storage system?
www.No-Tear.com



23201 Antonio Parkway Rancho Santa Margarita, CA 92688
INVENTORY MANAGEMENT SYSTEMS. BUILDING STORAGE AROUND YOUR SUPPLY CHAIN.