



PRODUCT SNAPSHOT





Est. 1990

Designed with *Employee Safety* and *Patient Care* in mind.



Our mission at DSI is to serve those who serve others in the field of healthcare. Frontline workers and support staff throughout a hospital need the right equipment to operate safely and efficiently. Our specialized storage systems are designed with employee safety and patient care at the forefront of every decision we make. With a highly trained and experienced sales force, we continue to deliver positive outcomes for hospitals across the country. Guideline compliance, enhanced workflow, employee safety, space optimization, and process improvements are just some of the benefits we provide when customers invest in our products and services. Established in 1990 and based in Southern California, we look forward to making a positive change in your department.

Product Offering



Modu-Max CTS



Modu-Max



Modu-Cell



Modu-Cab



Wire Shelving



Modu-Wall



Workstations



Track Systems

Value Added Services

DSI offers a full range of consultative services, project design, and implementation management. Product assembly and equipment installation is a large part of our value proposition to support our customers. With our turn-key installation services combined with our experience in the healthcare field, DSI continues to set itself apart from the competition. Our installation crews are insured, bonded, and have the working expertise to do it the right way, the first time.



Storage Consultation

Project Manager

We are organized, goal-oriented professionals who use innovation, creativity, and collaboration to lead projects that make an impact and meet specific goals.

Site Assessment

We measure the department, conduct an evaluation of the workflow, and gain an understanding of the PAR levels and inventory. Our findings from the site survey are pulled together into a comprehensive storage proposal and presented for review.

SPD Specialist

We are DSI employees, not manufacturing reps or contractors. Together we have over 150 years of combined experience working in hospitals and some of our TM's are CCSVP certified.



Design & Planning

Equipment Planner

We specify the appropriate equipment to ensure budgets are met, compliance is achieved, and guidelines are followed.

3D CAD Layouts

Created in-house to enable our customers to truly visualize their future department.

Design Engineer

We develop and design custom configured products that function, perform, and fit the intended purpose for the specific application.

Product Sourcing

We have the ability to source a range of different products beyond our core product line. A one-stop shop for storage.



Implementation

Logistics Coordinator

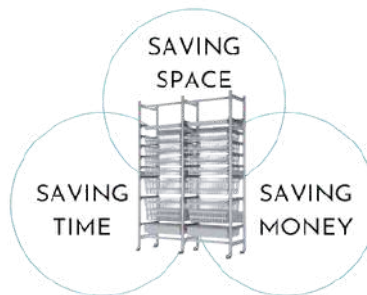
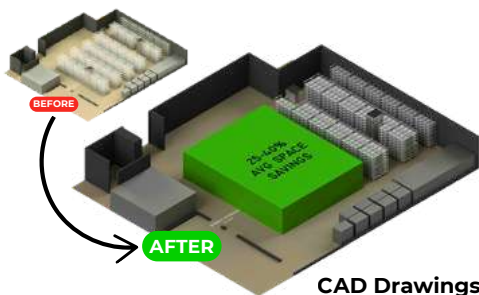
We plan, coordinate, and schedule the deliveries to ensure the orders arrive safely and on time.

Product Installation

Our TM's handle the complex process of onsite product assembly and installation and our crews are insured and bonded.

After-Sales Service

We offer follow-up support, onsite training, in-service repairs, and a limited lifetime warranty so you are covered after the purchase.



AAMI ST79 Storage Guidelines

STOP STACKING



START COMPLYING



MODU-MAX CTS

sterile instrument storage

STOP STACKING



START COMPLYING

AAMI ST79 Storage Guidelines

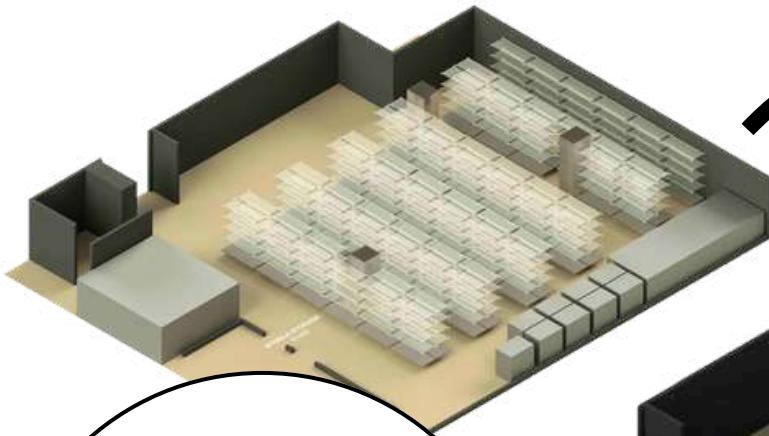
- 1 Stacking** can result in damage to the wrap caused by undue pressure from the weight. 11.1.1
- 2 Compression** of packages can force air and **microorganisms** into the package...which lead to **contamination**. 11.1.1
- 3** Sterile items should be handled in a manner that avoids **dragging, sliding, crushing, bending, compressing, puncturing...** compromising the sterility of the contents. 11.2.1

ANSI/AAMI ST79:2017 American National Standard: Comprehensive guide to steam sterilization assurance in health care facilities
Published by AAMI 4301 N. Fairfax Dr., Suite 301 Arlington, VA 22203-1633 www.aami.org © 2017
by the Association for the Advancement of Medical Instrumentation

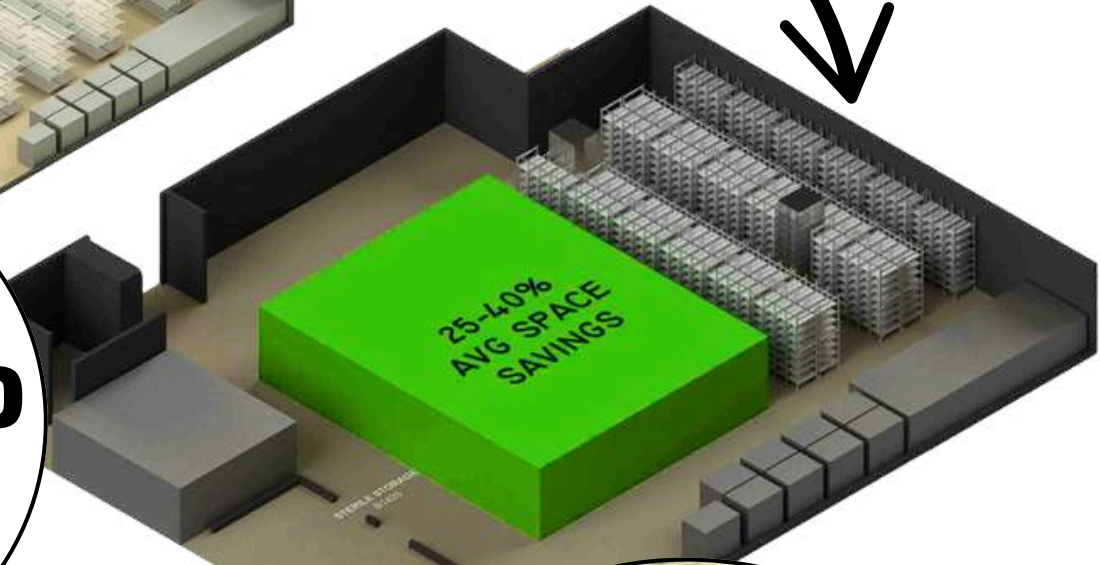
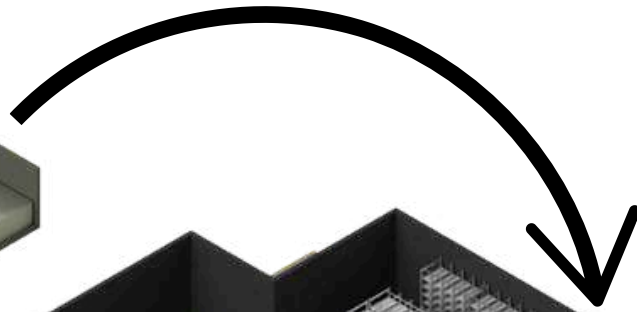


MODU-MAX CTS

sterile instrument storage



25-40%
SPACE
SAVINGS



- ✓ Toolless Adjustability
- ✓ Dedicated Locations
- ✓ Dust Covers

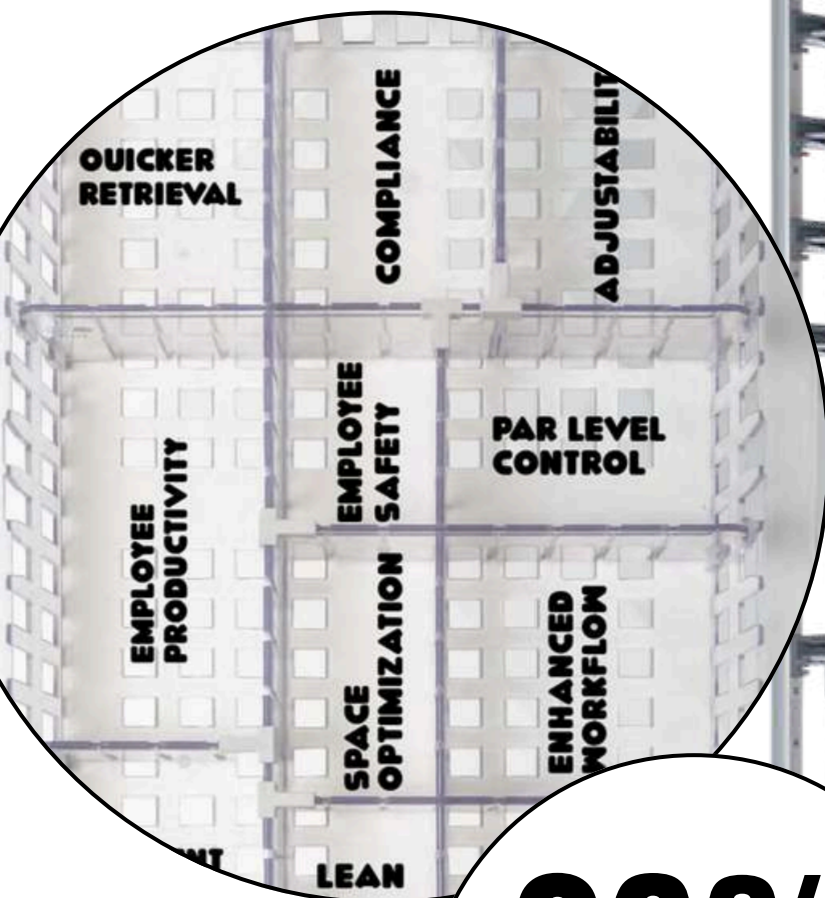
- ✓ Custom Labeling
- ✓ Enhanced Ergonomics
- ✓ Stainless Steel Pullout Shelves

MODU-MAX

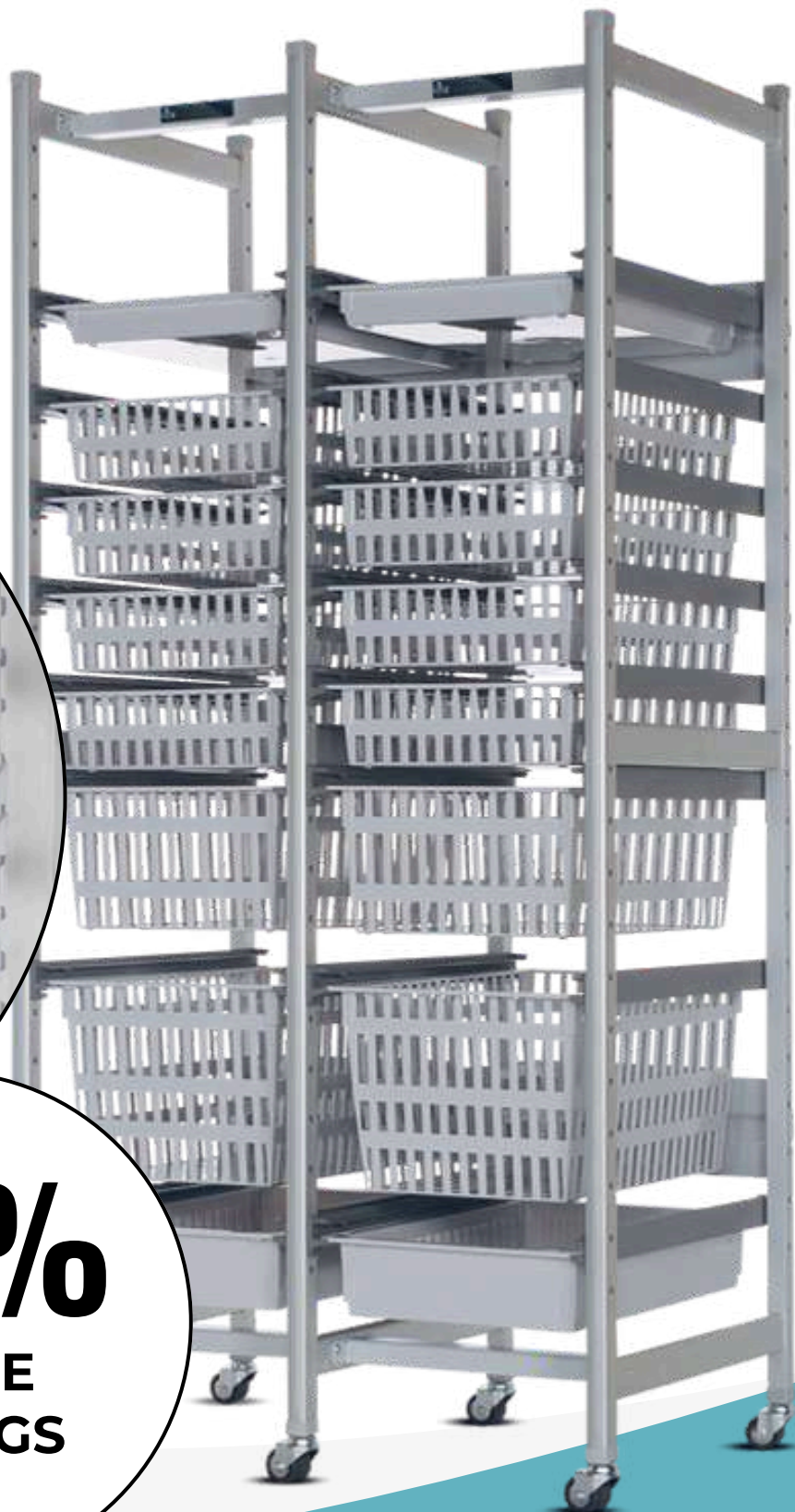
high density supply storage

BASKET BENEFITS

- ✓ Supply Chain, SPD, OR Core
- ✓ 100% Basket Extension
- ✓ Adjustable Compartments
- ✓ PAR Level Management
- ✓ Custom Labeling

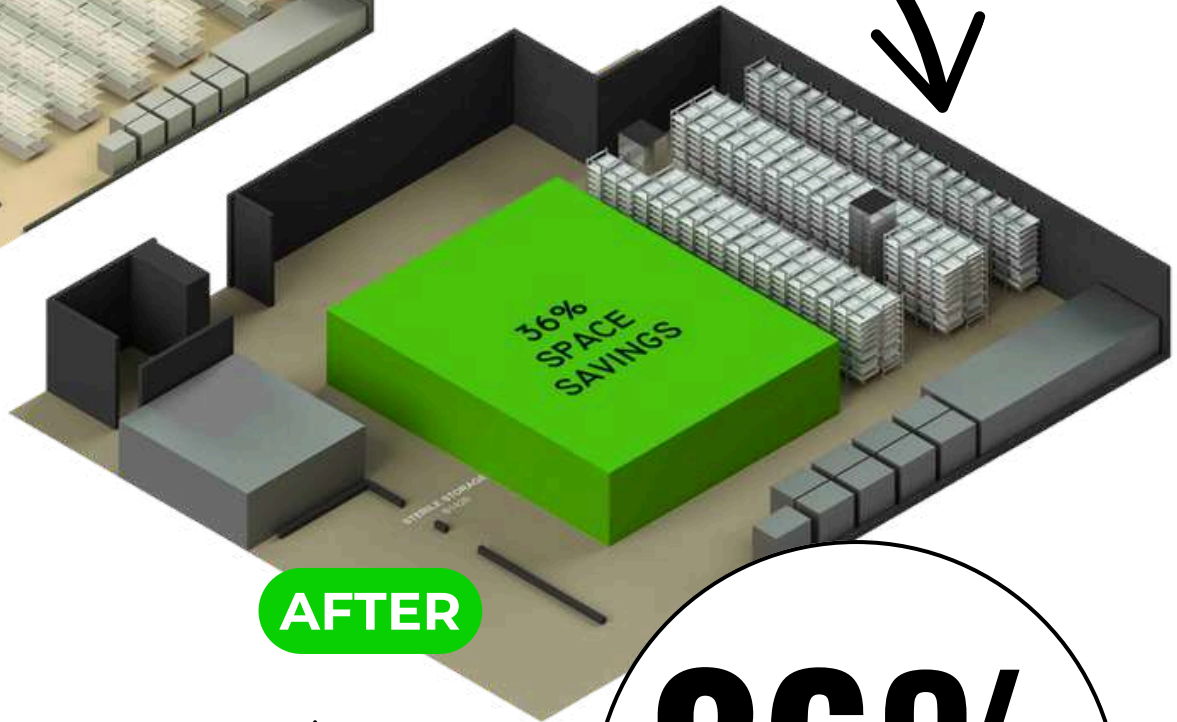
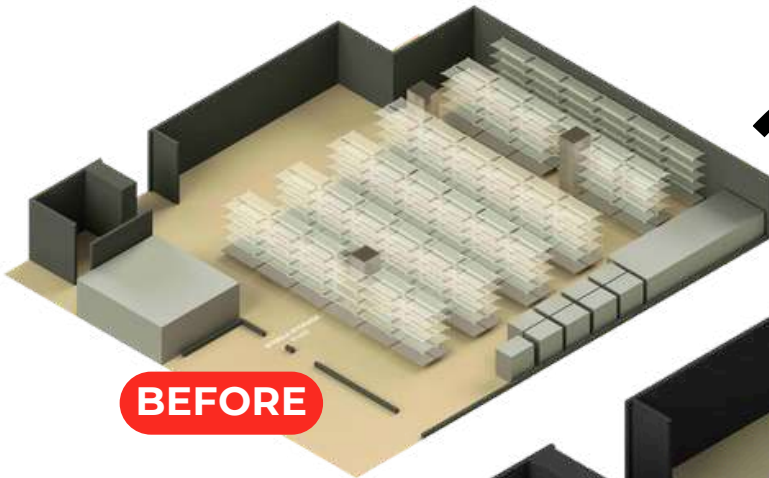


36%
SPACE
SAVINGS



MODU-MAX

high density supply storage



36%
SPACE SAVINGS

VALUE ADDED SERVICE

- ✓ 3D AutoCAD Room Layout
- ✓ Space & Inventory Assessment
- ✓ Custom Product Design
- ✓ Extensive Proposal With ROI
- ✓ Product Assembly / Application

MODU-CELL

operating room storage

SAVE TIME



- ✓ Fast Retrieval
- ✓ 25% Avg. Space Savings
- ✓ Security / Lockability
- ✓ PAR Level Control
- ✓ Cost Savings
- ✓ Compliance



20%
EST. TIME
SAVINGS

MODU-CELL

operating room storage



- ✓ 20% Estimated Time Savings
- ✓ Infection Control
- ✓ Space Optimization
- ✓ Better Control of Expired Supplies
- ✓ Cost Savings
- ✓ Less Walking, Less Waiting, Less Searching



ROBOTIC INSTRUMENTS

complete storage system

PROTECT. ORGANIZE. MANAGE.

PROTECT
Arms & Tips

EASY
Access

Maintain
STERILITY



ORGANIZE
Inventory

QUICK
Retrieval

COST
Savings

The Cost of Operation

- **Purchase Price** - \$500,000 to \$2,500,000
- **Cost per Instrument Tip** - \$200 avg.
- **Instrument Tip** - 10 to 14 uses
- **Disposables** - \$2,500 avg. per procedure
- **Annual Service Price** - \$190,000 avg.
- **Cost per Surgery** - \$3,500 to \$6000 avg.

'It's time to **protect** *Leonardo's* instruments!'

-Scrubs-

OUR COMPLETE STORAGE SYSTEM



DSI DELIVERS

robotic instrument storage solutions

MODU-MAX Hanging Solution



- Space optimization
- Inventory management
- Enhanced workflow
- PAR level control
- Quick retrieval time
- Increased employee productivity

MODU-MAX High Density Baskets



- 30-40% space-savings vs. open wire shelving
- Perfect fit for Supply Chain, SPD, and OR Core
- 100% basket extension for better accessibility
- Space optimized with adjustable compartments
- Baskets improve PAR level management
- Handle labels improve location and identification

MODU-MAX **sterileShelf**

clean storage technology



- Adjustable shelves to maximize space
- Eliminates stacking of blue wraps
- Dedicated location for containers
- SterileShelf attributes:
 - Rust-free, no sharp edges, anti-microbial properties, non-porous surface, easy to clean
 - Chemical, moisture, and heat resistant

MODU-WALL Wire Shelving



- Open wire storage for easy identification of items
- Inventory compartmentalized into smaller spaces
- Adjustability improves material management
- Custom configurable, cost effective, and durable

BASKET HANDLE

label holder and pull handle

UPGRADE YOUR BASKETS



BEFORE



AFTER



LABEL HOLDER BENEFITS

- ✓ Fast Retrieval
- ✓ Stay Organized
- ✓ Color Coding
- ✓ Better Grip
- ✓ Quickly Identify Products
- ✓ Effortless Access to Inventory



STERILE SHELF®

clean storage technology

sterile shelf

clean storage technology



KEY CHARACTERISTICS

1-DURABILITY:

DSI's **sterile shelf** is resistant to a high degree of usage, ensuring a long lifespan, even in heavy-duty applications.

2-CHEMICAL RESISTANCE:

The **sterile shelf** can withstand exposure to chemicals, solvents, and corrosive substances without degrading or losing its structural integrity.

3-MOISTURE RESISTANCE:

DSI's **sterile shelf** is impervious to water, humidity, and moisture, preventing warping, swelling, and mold growth.

4-HEAT RESISTANCE:

The **sterile shelf** material can endure high temperatures and is suitable for environments where heat exposure is common.

5-EASE OF MAINTENANCE:

The non-porous surface of DSI's **sterile shelf** is easy to clean and maintain, critical to infection control in hospital applications.

SHELF ATTRIBUTES	STERILE SHELF®	CHROME WIRE
Rust Free	✓	✗
No Sharp Edges	✓	✗
Bacteria Resistant	✓	✗
Stain Resistant	✓	✗
Antimicrobial Propt.	✓	✗
Moisture Proof	✓	✗
Non-Reactive	✓	✗
Corrosion Resistant	✓	✗
Heat Resistant (350°)	✓	✗
Easy to Clean	✓	✗
Non-Porous	✓	✓
Scratch Resistant	✓	✓

COLOR CODING

custom labels and panels

**BETTER
VISUALS
QUICKER
RETRIEVAL**



BEFORE



AFTER



CUSTOM LABEL BENEFITS

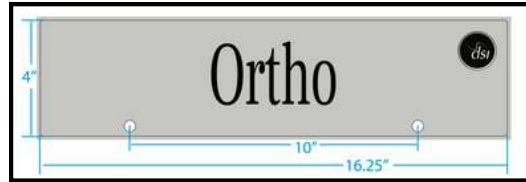
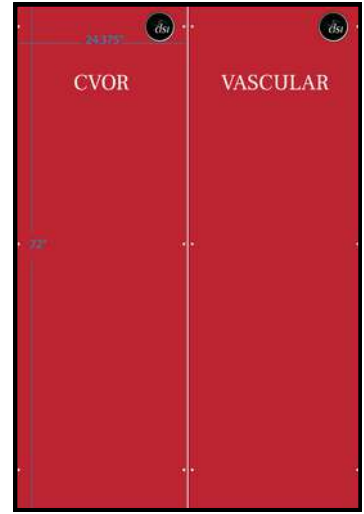
- ✓ Sectional Flag Labels
- ✓ Half or Full End Panels
- ✓ Custom Verbiage
- ✓ Hospital Logo
- ✓ See Through or Solid Finish
- ✓ Full Color Wheel



CUSTOM DESIGN

custom panels and color labeling

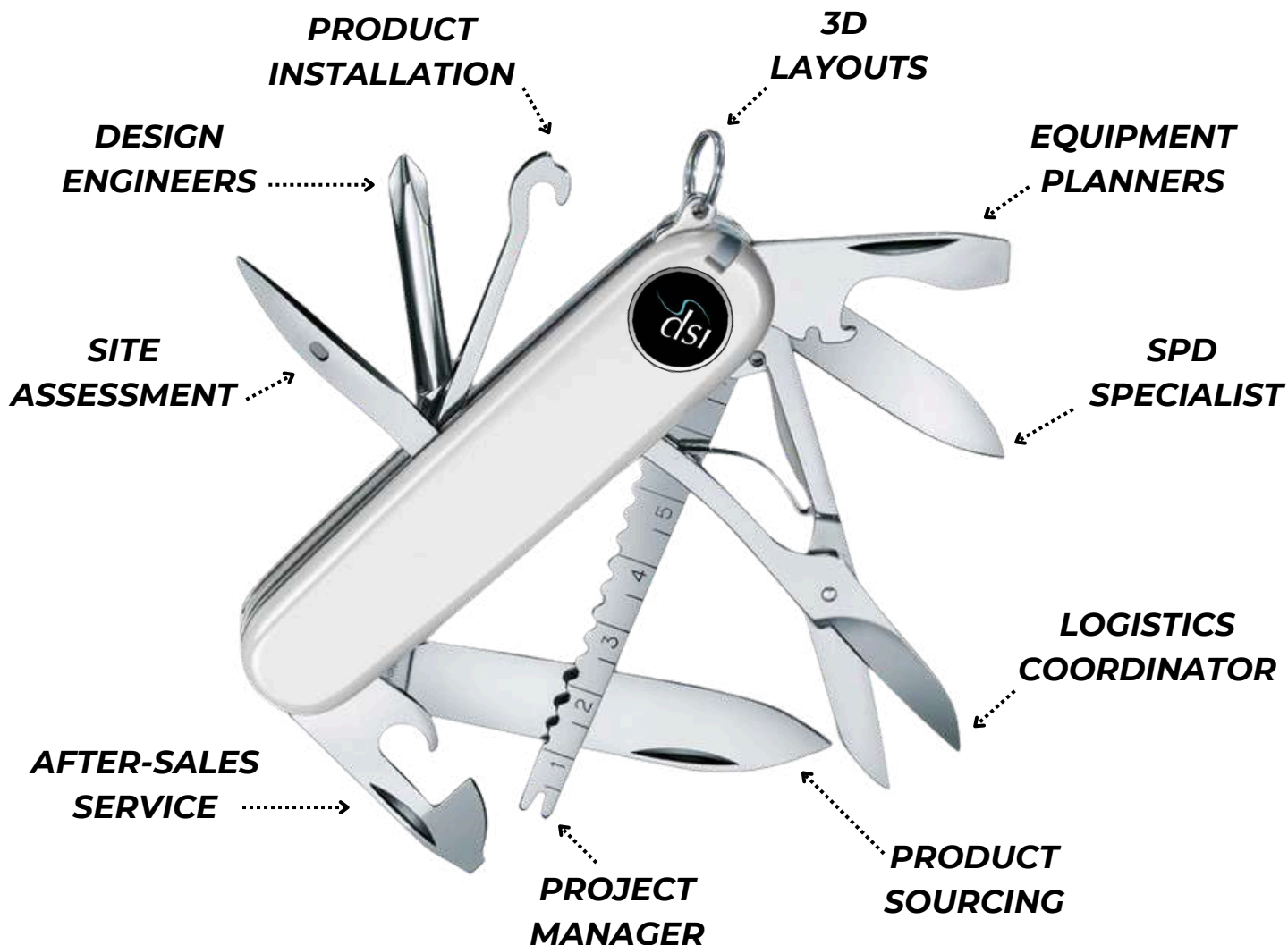
CUSTOM SIZING ORGANIZE SPACE



TERRITORY **MANAGER**

multit-skilled sales consultant

THE **SWISS ARMY KNIFE** OF SALES **10X THE VALUE**



TERRITORY MANAGER

healthcare storage expert

VALUE ADDED SERVICES



PROJECT MANAGER



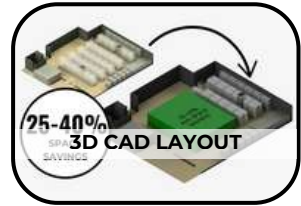
SITE ASSESSMENT



SPD SPECIALIST



EQUIPMENT PLANNER



25-40% savings
3D CAD LAYOUT



DESIGN ENGINEER



PRODUCT SOURCING



LOGISTICS COORDINATOR



PRODUCT INSTALLER



AFTER SALES SERVICE

Storage Consultation

1-Project Manager:

We are organized, goal-oriented professionals who use innovation, creativity, and collaboration to lead projects that make an impact and meet specific goals.

2-Site Assessment:

We measure the department, conduct an evaluation of the workflow, get an understanding of the PAR levels, and measure the inventory. Our findings from the site survey are pulled together into a comprehensive storage proposal and presented for review.

3-SPD Specialist:

We are DSI employees, not manufacturing reps or contractors. We have over 100 years of combined experience working in hospitals and some of our TM's are CCSVP certified. DSI was established in 1990.

Design & Planning

4-Equipment Planner:

We specify the appropriate equipment to ensure budgets are met, compliance is achieved, and guidelines are followed.

5-3D CAD Layouts:

Created in-house to enable our customers to truly visualize their future department.

6-Design Engineer:

We develop and design custom configured products that function, perform, and fit the intended purpose for the specific application.

7-Product Sourcing:

We have the ability to source a range of different products beyond our core product line. A one stop shop for storage.

Implementation

8-Logistics Coordinator:

We plan, coordinate, and schedule the deliveries to ensure the orders arrive safely and on time.

9-Product Installation:

Our TM's manage the complex process of onsite product assembly and installation. Our crews are also Insured and Bonded.

10-After Sales Service:

We offer follow-up support, onsite training, in-service repairs, and a limited lifetime warranty so you are covered after the purchase.

'What price would you pay for good service?'
-Scrubs





Designed with *Employee Safety* and *Patient Care* in mind.

Contact DSI for a *free* storage assessment.

25901 commercentre drive | lake forest | ca | 92630

dsidirect.com | 800.393.6090